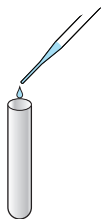


premier platinum

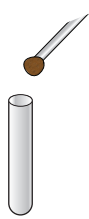
HpSA® PLUS

TEST PROCEDURE

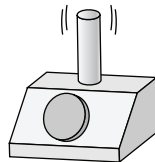
How to perform the test



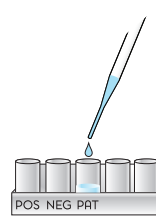
1. Add 500 μ L of Sample Diluent to a test tube.



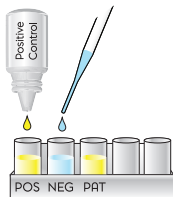
2. **Solid Stool:** Using applicator stick, add small portion (5 - 6 mm diameter) of thoroughly mixed stool to tube and emulsify using the applicator stick.
Liquid Stool: Using Transfer pipette, add 100 μ L of stool to tube. Rinse pipette several times.



3. Vortex for 15 seconds.



4. Using the transfer pipette, add 100 μ L of diluted stool to a test well (PAT).



5. Add 2 drops of Positive Control and 100 μ L of Negative Control (Sample Diluent) reagents to designated wells.



6. Add 1 drop Enzyme Conjugate to all wells. Shake firmly for 30 seconds. Seal the plate and incubate at 19-27 $^{\circ}$ C for 1 hour.

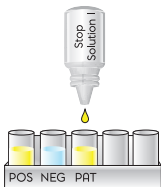


7. Wash 5 times with 1X Wash Buffer.

* See package insert for proper wash procedure



8. Add 2 drops of Substrate Solution I to all wells. Shake firmly for 30 seconds and incubate for 10 minutes at 19-27 $^{\circ}$ C.



9. Add 2 drops of Stop Solution I to each well and firmly shake for 30 seconds.

Interpretation of Results

Visual:

Negative: Colorless to Faint Yellow
Positive: Definite Yellow Color

A faint yellow color must be evaluated spectrophotometrically. If a spectrophotometer is not available, the cutoff must be determined by another method.

Spectrophotometric Single Wavelength (450 NM):

Positive Control= OD 450 \geq 0.640
Negative Control= OD 450 < 0.140
Positive Test: OD 450 \geq 0.140
Negative Test: OD 450 < 0.140

Spectrophotometric Dual Wavelength (450/630 NM):

Positive Control= OD 450/630 \geq 0.600
Negative Control= OD 450/630 < 0.100
Positive Test: OD 450/630 \geq 0.100
Negative Test: OD 450/630 < 0.100

NOTE: This chart does not contain complete instructions for use. For further information please thoroughly read the package insert.



This illustration is representative of the current Package Insert at the time of publication. Please refer to the most current version of the Package Insert for complete instructions.

USA/CORPORATE OFFICE

3471 River Hills Drive
Cincinnati, Ohio 45244 USA
Telephone: 513-271-3700

MERIDIAN BIOSCIENCE EUROPE

Belgium/Luxembourg Tel: +32 (0)6789 5959
France Tel: +33 (0)1 4256 0440
Germany Tel: +49 (0)3371 60 222 31
Italy Tel: +39 0331 43 3636
Netherlands Tel: +31 (0)411 62 11 66
United Kingdom Tel: +44 (0)20 8453 7970

Orders/Customer Service: 1-800-543-1980
Technical Support: 1-800-343-3858
Information Fax: 513-272-5432
Ordering Fax: 513-271-0124
meridianbioscience.com

meridian BIOSCIENCE™