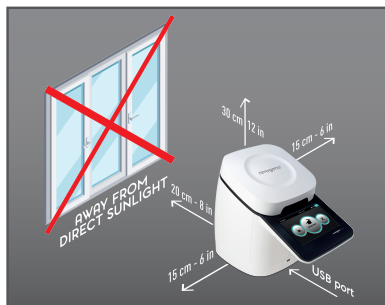


## INSTRUMENT REFERENCE GUIDE

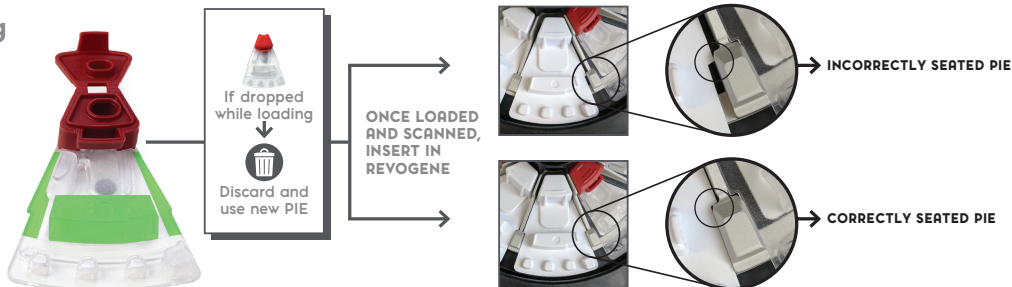
How to operate Revogene

### Instrument Location



- Place the instrument away from direct sunlight
- The minimum recommended clearances are 6 inches for left and right, 8 inches rear and 12 inches overhead.
- Operate the instrument between 20 to 28 C with a humidity level not more than 80%
- The maximum altitude for proper functionality is 2000 meters.

### PIE handling



- Handle the PIE with care by holding and/or writing only in the area indicated in green above.
- If a PIE containing a specimen is shaken or, inverted, or dropped (with or without specimen), discard and prepare another PIE.
- Ensure that the PIE is correctly seated in its space; retaining shoulders should be behind the stopping notches of the rotor as shown above.
- Apply gentle up and down movements to ensure the PIE is correctly seated.

FLIP OVER TO BACK



This illustration is representative of the current and complete instructions for use at the time of publication. Please refer to the most current complete versions of the assay and instrument instructions. [www.meridianbioscience.com/pi](http://www.meridianbioscience.com/pi)

#### USA/CORPORATE OFFICE

3471 River Hills Drive  
Cincinnati, Ohio 45244, USA  
Telephone: 513-271-3700

#### EMEA, MERIDIAN BIOSCIENCE EUROPE

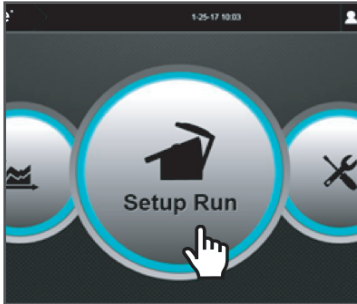
Phone: +39 0331433636  
E-mail: [MBE-TechService@meridianbioscience.eu](mailto:MBE-TechService@meridianbioscience.eu)

Orders/Customer Service: 1-800-543-1980  
Technical Support: 1-800-343-3858  
Information Fax: 513-272-5432  
Ordering Fax: 513-271-0124  
[meridianbioscience.com](http://meridianbioscience.com)

## INSTRUMENT REFERENCE GUIDE

How to operate Revogene

### Test set up



- Start the test by navigating to the 'Setup Run' menu. Select the assay you want to run. Follow the onscreen instructions to load the patient test PIE.
- Load the remaining patient test PIEs. If less than eight (8) PIEs are being tested, load MOCK PIEs in the carousel in the remaining positions.
- Scan the retention ring and place it on the carousel.

### Start test



- Close the instrument lid with both hands and ensure the lid lock engages.
- Select 'Start' to initiate the test and walk away.
- The lid opens when the run is complete.
- Remove all PIEs including MOCK PIEs after the run.
- Tap the 'Results' icon to see test results.



**NOTE:** Clean the instrument at least weekly, using this 3 step approach:

~10% bleach



70% isopropyl alcohol



Repeat 70% isopropyl alcohol



This illustration is representative of the current and complete instructions for use at the time of publication. Please refer to the most current complete versions of the assay and instrument instructions. [www.meridianbioscience.com/pi](http://www.meridianbioscience.com/pi)