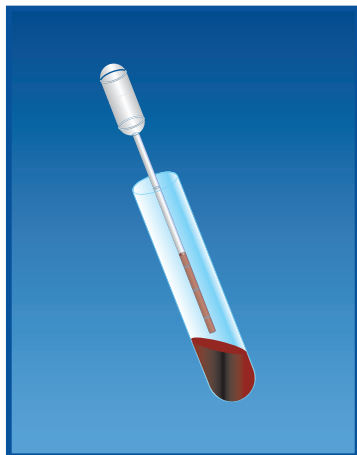




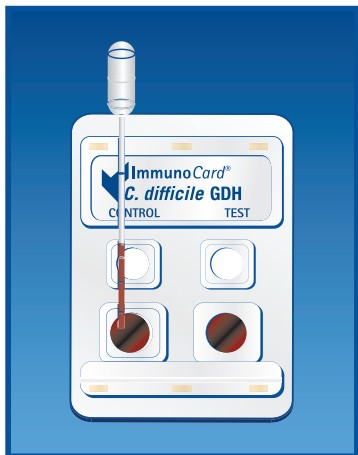
1. In a test tube, add 200 μ L of Sample Diluent using the dropper assembly.



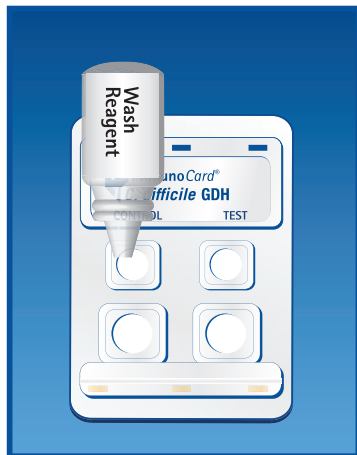
2. Add 25 μ L of liquid stool (first mark on the transfer pipette) or 2 mm diameter of solid stool* to the test tube. Vortex mixture for 10 seconds.



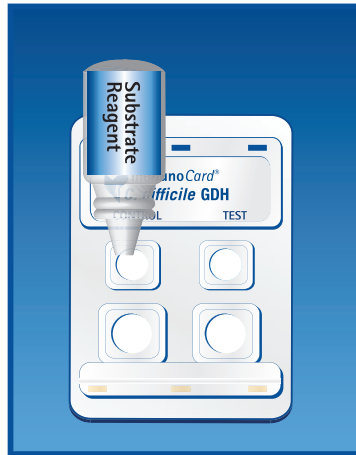
3. Hold Enzyme Conjugate vertically and add 3 drops to the test tube. Vortex for 10 seconds. Let the tube stand at 20-26 C for 15 minutes.



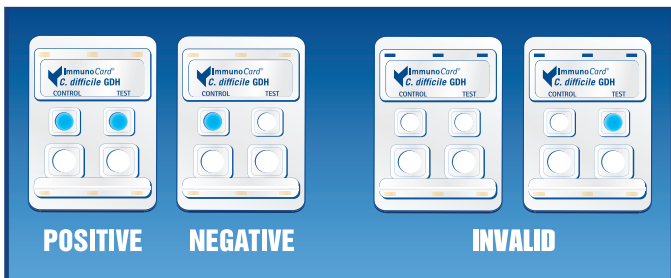
4. Vortex for 10 seconds. Using a transfer pipette, add 150 μ L (second mark on the pipette) of diluted specimen to the right and left sample (lower) ports. Incubate 5 minutes at 20-26 C.



5. Hold Wash Reagent vertically and add 3 drops to each reaction (upper) port.



6. Once Wash Reagent is absorbed, hold Substrate Reagent vertically and add 3 drops to both reaction (upper) ports. Incubate for 5 minutes at 20-26 C. Visually read the results within 30 seconds of the end of incubation.



©2011 SN11085 REV. 10/16

* The following illustration depicts approximate sample size when testing solid, semi-solid, or non-pipettable stools.



This illustration is representative of the current Package Insert at the time of publication. Please refer to the most current version of the package insert for complete instructions.

USA/CORPORATE OFFICE
 3471 River Hills Drive
 Cincinnati, Ohio 45244 USA
 Telephone: 513.271.3700

Orders / Customer Service: 1.800.543.1980
 Technical Support: 1.800.343.3858
 Information Fax: 513.272.5432
 Ordering Fax: 513.271.0124
www.meridianbioscience.com

MERIDIAN BIOSCIENCE EUROPE

Belgium/Luxemburg Tel: +32 (0) 167 89 59 59
 France Tel: +33 (0) 1 42 56 04 40
 Germany Tel: +49 (0) 3371 681 500
 Italy Tel: +39 0331 43 3636
 Netherlands Tel: +31 (0) 411 62 11 66
 United Kingdom Tel: +44 (0) 20 8453 7970

 **Meridian**
Bioscience, Inc.
 Inspired Science. Trusted Solutions.™