

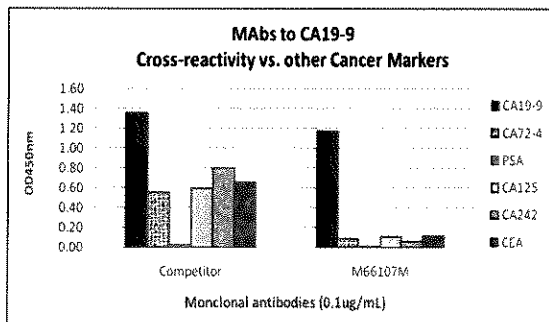
## CERTIFICATE OF ANALYSIS

**Important Note:** Centrifuge before opening to ensure complete recovery of vial contents.

**Catalog #:** M66107M **Lot #:** M35160019  
**Page 1 of 2**

**Description:** MAb to Cancer Antigen CA19-9  
 Monoclonal Antibody to Human Cancer Antigen CA19-9 (Gastrointestinal Cancer)

**Specificity:** CA19-9 Antigen. Does not crossreact with CA72-4, PSA, CA125, CA242 and CEA.



**Indirect ELISA:**  
 Purified tumor marker antigens were coated on the microtiter wells.  
 MAbs were incubated in the wells at 0.1 µg/mL, followed by Goat anti-Mouse IgG Fc: HRP conjugate and TMB substrate.

**Host Animal:** Mouse **Isotype:** IgG<sub>1</sub>

**Source:** Ascites

**Immunogen:** Human colorectal adenocarcinoma cell-line COLO205.

**Format:** Purified, Liquid **Exp. Date:** 17 JUL 2024  
 Product is 0.2 µm filtered.

**Purification:** > 90% pure (SDS-PAGE). Protein A Chromatography  
 Test Results: 90.8 % (non-reduced)

**Concentration:** 4.60 mg/mL (OD280nm, E<sup>0.1%</sup> = 1.4)

**Buffer:** 10 mM Sodium Phosphate, 150 mM Sodium Chloride, pH 7.4 ± 0.2.

**Preservative:** 0.05% Sodium Azide



# Meridian

## Life Science, Inc.

Innovative Solutions. Trusted Partner.®

5171 Wilfong Road

Memphis, TN 38134

USA

Telephone: 901-382-8716

Fax: 901-333-8223

Email: [info@meridianlifescience.com](mailto:info@meridianlifescience.com)

[www.MeridianLifeScience.com](http://www.MeridianLifeScience.com)

Catalog #M66107M

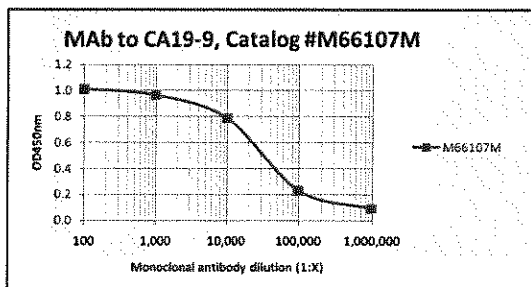
Page 2 of 2

### Applications:

Suitable for use in ELISA. Each laboratory should determine an optimum working titer for use in its particular application. Other applications have not been tested but use in such assays should not necessarily be excluded.

Recommended antibody pairs for sandwich immunoassay:

Capture	Detection
M66107M	M66106M
M66107M	M66108M



### Titration curve of M66107M in indirect ELISA:

Antigen: CA19-9 Antigen (Catalog#A97185H) coated at 30 Units per well.

Antibody: Dilution series of M66107M, followed by Goat anti-Mouse IgG Fc:HRP conjugate and TMB substrate.

### Storage:

Short term (up to 7 days) store at 2-8°C. Long term, aliquot and store at -20°C. Avoid multiple freeze/thaw cycles.

### Safety Note(S):

See appropriate Safety Data Sheet (SDS) for additional information.

*Bil Olson*

Signature

27 AUG 2019

Date

**FOR RESEARCH OR FURTHER MANUFACTURING USE ONLY**