



**Meridian**  
**Life Science, Inc.**  
Innovative Solutions. Trusted Partner.®

5171 Wilfong Road  
Memphis, TN 38134  
USA  
Telephone: 901-382-8716  
Fax: 901-333-8223  
Email: [info@meridianlifescience.com](mailto:info@meridianlifescience.com)  
[www.MeridianLifeScience.com](http://www.MeridianLifeScience.com)

## CERTIFICATE OF ANALYSIS

Catalog #M66113M  
Page 1 of 2

**Important Note:** Centrifuge before opening to ensure complete recovery of vial contents.

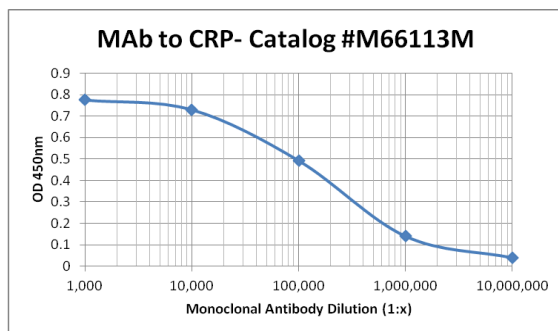
<b>Catalog #:</b>	M66113M	<b>Lot #:</b>	1L36011
<b>Description:</b>	MAb to CRP Monoclonal Antibody to Human C Reactive Protein (CRP)		
<b>Specificity:</b>	Human CRP. Recognizes antigen both in the presence and in the absence (samples containing EDTA) of $\text{Ca}^{2+}$ .		
<b>Host Animal:</b>	Mouse	<b>Isotype:</b>	IgG <sub>2a</sub>
<b>Source:</b>	Ascites		
<b>Immunogen:</b>	Purified Human CRP		
<b>Format:</b>	Purified, Liquid	<b>Exp. Date:</b>	08 APR 2018
<b>Purification:</b>	> 90% pure (SDS-PAGE). Protein A Chromatography Product is 0.2 $\mu\text{m}$ filtered.		
<b>Concentration:</b>	6.2 mg/mL (OD <sub>280nm</sub> , $E^{0.1\%} = 1.4$ )		
<b>Buffer:</b>	10 mM Sodium Phosphate, 150 mM Sodium Chloride, pH 7.4 $\pm$ 0.2.		
<b>Preservative:</b>	0.05% Sodium Azide		



Catalog #M66113M  
Page 2 of 2

**Applications:**

Suitable for use in ELISA. Each laboratory should determine an optimum working titer for use in its particular application. Other applications have not been tested but use in such assays should not necessarily be excluded.



**Titration curve of M66113M in indirect ELISA**

Antigen: Human CRP antigen, coated at 0.1 µg/mL

Antibody: Dilution series of M66113M, incubated 2 hours at room temp followed by Goat anti-Mouse IgG:HRP conjugate and TMB substrate.

**Storage:**

Short term (up to 7 days) store at 2-8°C. Long term, aliquot and store at -20°C. Avoid multiple freeze/thaw cycles.

**Safety Note(s):**

Refer to the appropriate Safety Data Sheet (SDS) for additional information.

*Beverly L. Orr*

Signature

09 November 2017

Date

**FOR RESEARCH OR FURTHER MANUFACTURING USE ONLY**